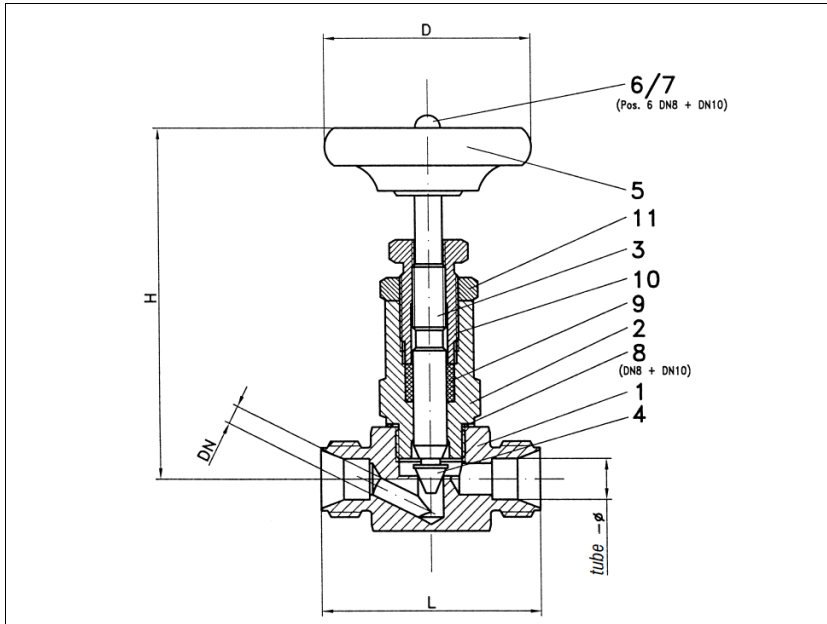


RK-NEEDLE VALVE

NVK-HP, DN4 - DN10, PN315



High pressure needle valve with clamping ring connection face to face acc. to producers standard

Specification:

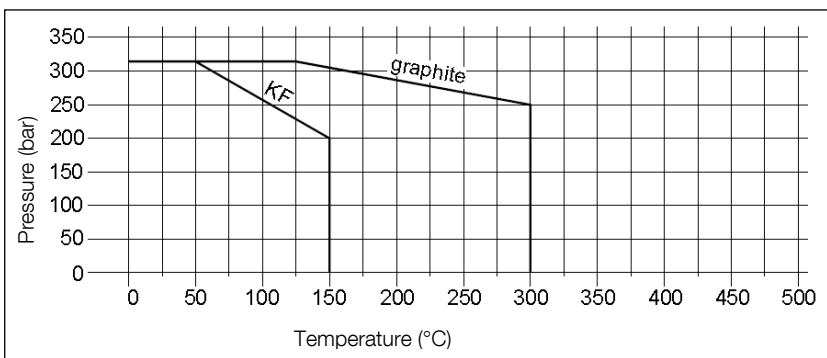
High pressure needle valve with clamping ring connection PN 315, body made of acid resistance forged steel (1.4571), metal tight conical globe, metal resealing, anti blow out spindle, spindle thread outside located, re-tightened stuffing box, stuffing box material KF or graphite, design free of non ferrous metals.

Marking: RK-Needle valve
Type: NVK-HP-1.4571

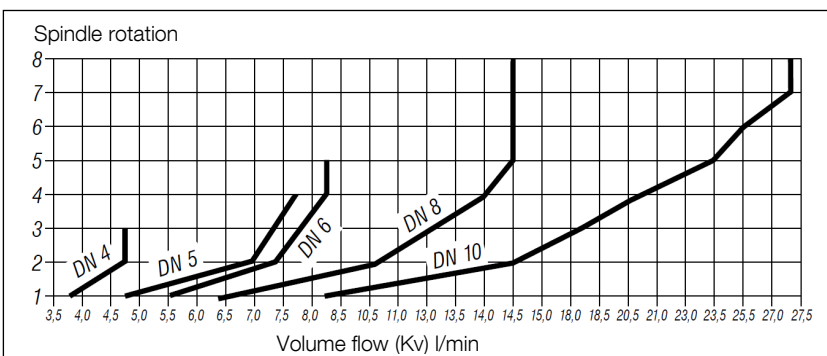
No.	Part	Material 1.4571-KF	Material 1.4571-Graphite
1	body	1.4571	1.4571
2	bonnet	1.4571	1.4571
3	spindle	1.4571	1.4571
4	globe	1.4571	1.4571
5	hand wheel	synthetic FS31	synthetic FS31
6	washer	1.4571	1.4571
7	nut	1.4571	1.4571
8	body seal	1.4571	1.4571
9	packing	KF	Graphite
10	tightening nut	1.4571	1.4571
11	nut	1.4571	1.4571

Dimensions

DN	PN	tube-Ø	dimensions in mm		
			L	H	D
4	315	6	55	84	50
5	315	8			
6	315	10			
6	315	12	80	87	63
8	315	15			
10	315	18			



Ordering example:
NVK-HP-1.4571-Graphite, DN8, PN315



Subject to modification. 11/2023